

D-M-E Hot Runner Systems

 **Meteor**[™]
Hot Runner Systems

Custom configured
for quick delivery



D-M-E

ADVANTAGES

- Three levels of quick-delivery hot runner systems
- In-line and X-style manifolds for 2- and 4-drop applications
- Suitable for engineered and commodity resins
- Cost-effective
- Satisfaction 100% guaranteed

The MeteorTM Manifold System provides a versatile yet economical solution for many hot runner mold designs. Two-drop (in-line) and four-drop (X-style) manifolds are available in sizes to suit a variety of applications. Pre-engineered with accurately machined flow channels, nozzle ports can be freely located anywhere within each manifold's flow channel limits. Stocked for quick delivery, Meteor manifolds are supplied with replaceable, press-fit tubular heaters. A full complement of ancillary components are also available to complete the system design and construction. Nozzle selection can be made from a broad array of D-M-E nozzles, including the 250 and 375 Series, the popular Mini Gate-MateTM and the Gate-Mate 4TM Series.

Choose the MeteorTM System that's right for you

D-M-E offers three quick-delivery hot runner systems with varying levels of customization — you pick the one that fits your needs.



Meteor 1
hot runner systems available for same-day shipment.

Meteor 1

- Standard, off-the-shelf manifolds with machined horizontal flow channel.
- Customer machines vertical flow channel locations and end plugs for maximum configuration flexibility.
- Customer can easily order a Meteor 1 manifold kit and select nozzles, supports, nozzle seat, locating ring, thermocouples and other necessary items — for same-day shipment.



Meteor 2
manifold and components systems ship in one week or less.

Meteor 2

- Manifold and components system, integrated with a Meteor 1 manifold kit.
- Customer specifies nozzles, supports, nozzle seat, locating ring, thermocouples, etc.
- D-M-E performs vertical flow channel and end plug machining.
- Shipment in just one week (or less).

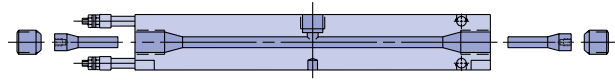
Meteor 3

- Complete hot half assembly, ready to bolt onto the mold.
- Turnkey solution with optional D-M-E mold base and 5-zone or 8-zone temperature controller.
- Hot half fully assembled, wired and tested.
- Industry-leading three-week delivery time.



Meteor 3
complete hot half assemblies ship in only three weeks.

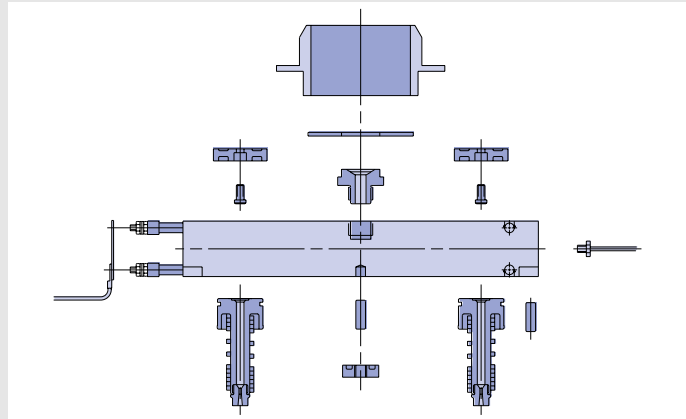
D-M-E mold base and temperature controller are optional.



THE METEOR PACKAGE

Each Meteor manifold kit includes the following standard items:

- Manifold with pre-machined horizontal flow channel
- Pre-installed, replaceable tubular heaters
- End plugs
- End plug set screws



ANCILLARY COMPONENTS

A variety of ancillary components available include:

- Locating rings
- Drool rings
- Nozzle seats
- Riser pads and cap screws
- Center support pads and dowel pins
- Thermocouples

NOZZLE OPTIONS

METEOR SYSTEM	EHA AND CIA		MINI GATE-MATE	GATE-MATE 4 SERIES
	250 SERIES	375 SERIES		
Meteor 1	✓	✓	✓	✓
Meteor 2	✓	✓	✓	✓
Meteor 3	✓	✓	—	✓

All nozzles have a selection of tip styles to suit material flow and gate cosmetic requirements.

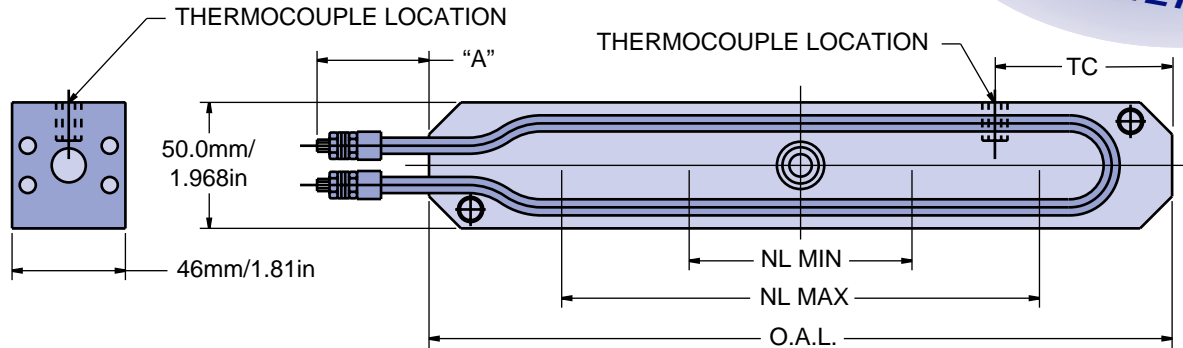
APPLICATION NOTES

- Mini Gate-Mate, Gate-Mate 4 and 250 Series nozzles to be used with manifold kits MEM0100K thru MEM0200K, MCM0100K thru MCM0200K and MXM0100K thru MXM0200K. Gate-Mate 4 and 375 Series nozzles to be used with all other manifold kits.
- All manifolds with suffix of 100K, 150K and 200K have a 9mm diameter flow channel; all other manifolds have a 12mm diameter flow channel.
- CIA High Performance nozzles are recommended for materials that process above 260°C/500°F.
- For filled or abrasive materials, wear-resistant tips are recommended.
- Meteor manifolds are not recommended for use with PVC material.

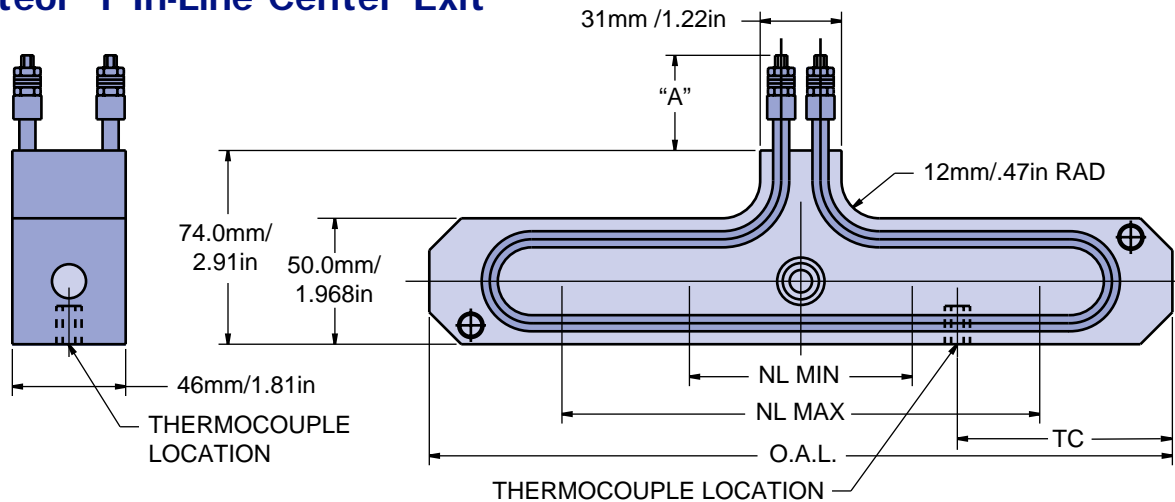
Contact D-M-E for assistance.

**METEOR 1
SAME-DAY
SHIPMENT!**

Meteor 1 In-Line End Exit

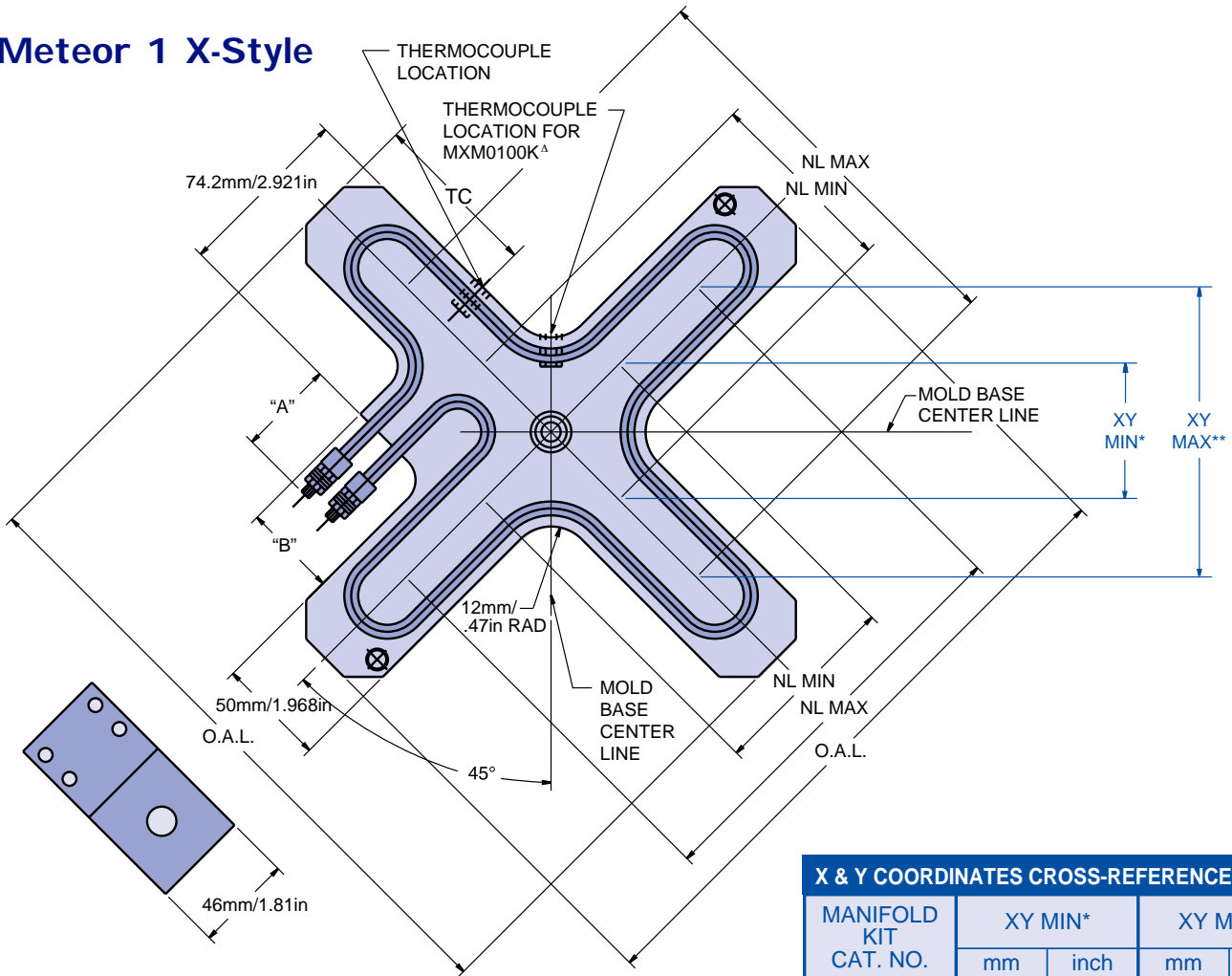


Meteor 1 In-Line Center Exit



MANIFOLD TYPE	MANIFOLD KIT CAT. NO.	NL MIN		NL MAX		O.A.L.		"A"		"B"		TC	
		mm	inch	mm	inch	mm	inch	mm	inch	mm	inch	mm	inch
IN-LINE END EXIT	MEM0100K	55	2.165	100	3.937	195	7.677	44.5	1.75	---	---	60	2.362
	MEM0150K	100	3.937	150	5.906	245	9.646	44.5	1.75	---	---		
	MEM0200K	150	5.906	200	7.874	295	11.614	44.5	1.75	---	---		
	MEM0300K	200	7.874	300	11.811	395	15.551	44.5	1.75	---	---		
	MEM0400K	300	11.811	400	15.748	495	19.488	50.8	2.00	---	---		
	MEM0500K	400	15.748	500	19.685	595	23.425	50.8	2.00	---	---	72.5	2.854
IN-LINE CENTER EXIT	MCM0100K	55	2.165	100	3.937	195	7.677	44.5	1.75	---	---	60	2.362
	MCM0150K	100	3.937	150	5.906	245	9.646	44.5	1.75	---	---		
	MCM0200K	150	5.906	200	7.874	295	11.614	44.5	1.75	---	---		
	MCM0300K	200	7.874	300	11.811	395	15.551	44.5	1.75	---	---		
	MCM0400K	300	11.811	400	15.748	495	19.488	50.8	2.00	---	---		
	MCM0500K	400	15.748	500	19.685	595	23.425	50.8	2.00	---	---	72.5	2.854
X-STYLE	MXM0100K	55	2.165	100	3.937	195	7.677	44.5	1.75	56.8	2.236	SEE PAGE 5 ^A	
	MXM0150K	100	3.937	150	5.906	245	9.646	44.5	1.75	51.3	2.020	60	2.362
	MXM0200K	150	5.906	200	7.874	295	11.614	50.8	2.00	51.3	2.020		
	MXM0300K	200	7.874	300	11.811	395	15.551	50.8	2.00	51.3	2.020		

Meteor 1 X-Style



X & Y COORDINATES CROSS-REFERENCE CHART				
MANIFOLD KIT CAT. NO.	XY MIN*		XY MAX**	
	mm	inch	mm	inch
MXM0100K	38.90	1.531	70.71	2.783
MXM0150K	70.71	2.783	106.07	4.176
MXM0200K	106.07	4.176	141.42	5.568
MXM0300K	141.42	5.568	212.13	8.352

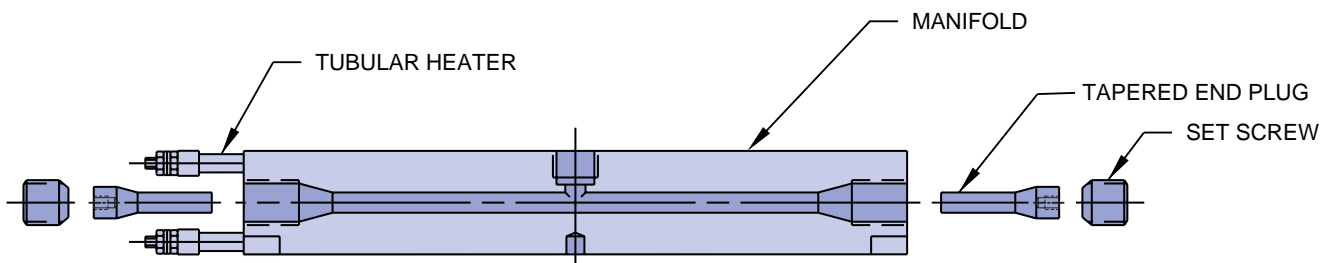
Meteor 1 Manifold Kit Includes:

In-Line System:

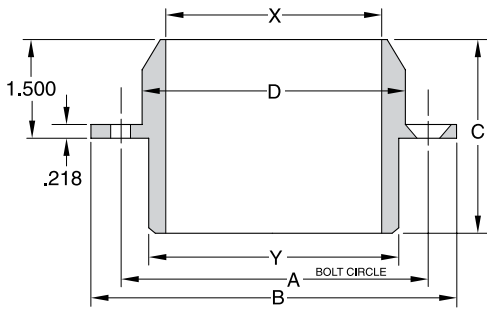
- (1) Manifold (center or end heater exit)
- (2) Tubular heaters (installed)
- (2) Tapered end plugs
- (2) Set screws

X-Style System:

- (1) Manifold
- (2) Tubular heaters (installed)
- (4) Tapered end plugs
- (4) Set screws



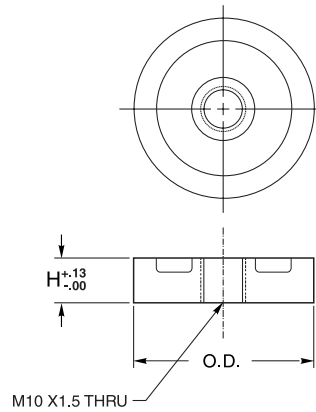
LOCATING RINGS



CATALOG NUMBER	D DIA.	X DIA.	Y DIA.	A	B DIA.	C
EHL0253	101mm 3.990in	82.5mm 3.250in	95mm 3.750in	117mm 4.625in	139.5mm 5.495in	73mm 2.875in
EHL0255	101mm 3.990in	82.5mm 3.250in	95mm 3.750in	117mm 4.625in	139.5mm 5.495in	114mm 4.500in

Includes (2) 1/2 inch long, 5/16 Flat Head Cap Screws.

CENTER SUPPORT PADS

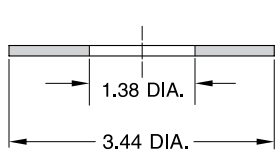


CATALOG NUMBER	O.D.		H	
	mm	in	mm	in
ECB0468	30	1.181	20	.787
ECB0469	30	1.181	10	.394
ECB0503	40	1.575	10	.394

NOTES:

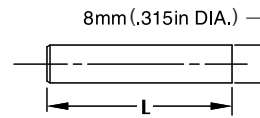
1. THE M10 X 1.5 tapped hole is used to screw the center support pad to a plate for machining the pad to the correct height.
2. An 8mm dia. dowel pin is required for assembly.

DROOL RING



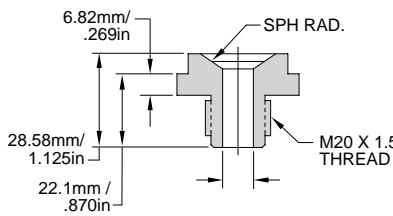
CATALOG NUMBER	EHL1003
----------------	---------

DOWEL PINS



CATALOG NUMBER	L	
	mm	in
DP8-20	20	0.787
DP8-28	28	1.102
DP8-32	32	1.260

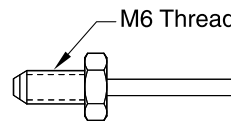
MACHINE NOZZLE SEATS



NOTE: Machine nozzle tip orifice to be matched properly with nozzle seat flow channel.

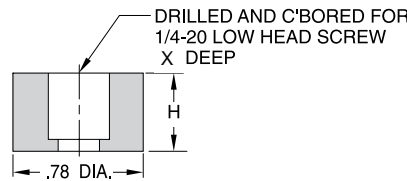
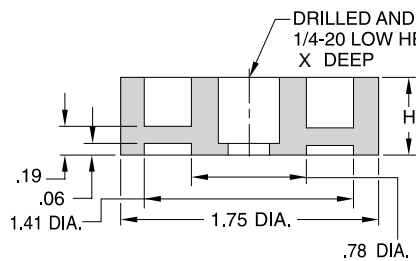
CATALOG NUMBER	"E" FLOW CHANNEL	SPHERICAL RADIUS
MNS0009	9mm .354in	1/2 + 3/4in
MNS1009	9mm .354in	15.5mm
MNS0012	12mm .472in	1/2 + 3/4in
MNS1012	12mm .472in	15.5mm

MANIFOLD THERMOCOUPLE



CATALOG NUMBER	ETC0252
----------------	---------

RISER PADS AND SCREWS



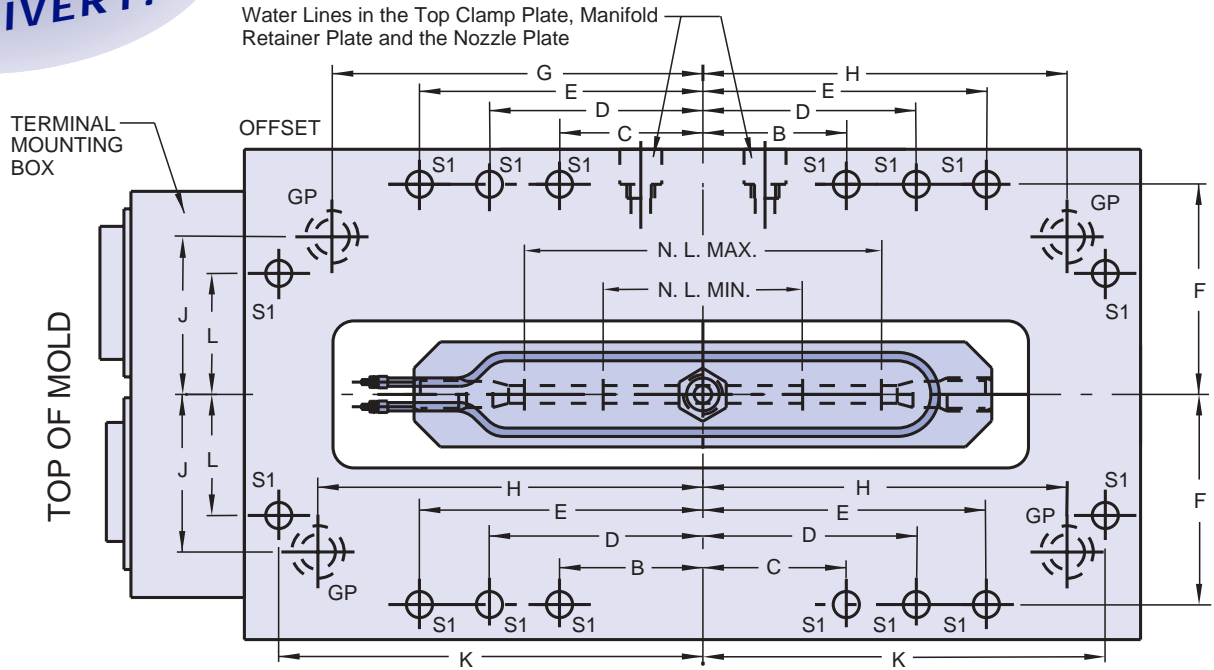
1/4-20 x 1/2 lg. LOW HEAD CAP SCREW (L.H.C.S.)

CATALOG NUMBER	H		"X"	
	mm	in	mm	in
ERP1001	12.7	.500	10	.405
ERP1002	19	.750	16.6	.655

CATALOG NUMBER	H		"X"	
	mm	in	mm	in
ERP1011	12.7	.500	10	.405
ERP1012	19	.750	16.6	.655

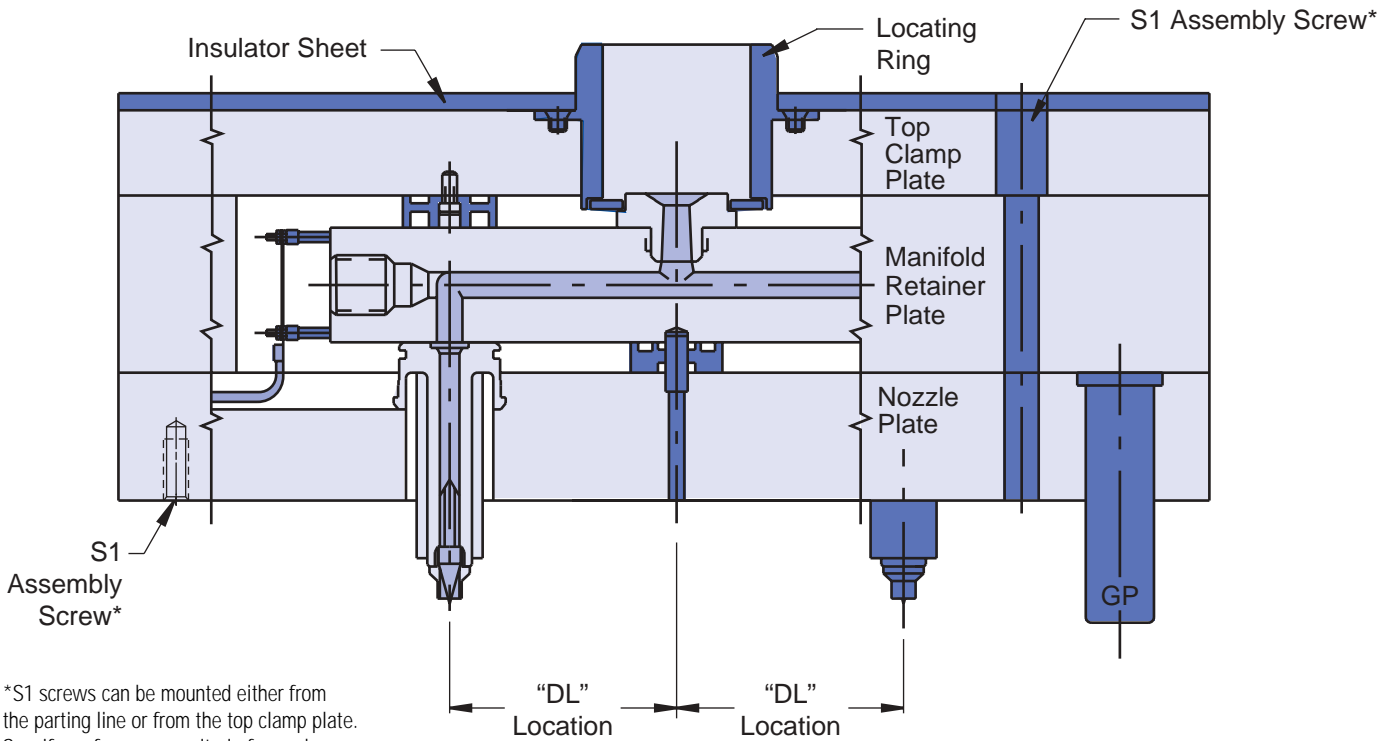
CATALOG NUMBER	1412LH
----------------	--------

**METEOR 3
THREE-WEEK
DELIVERY!**



NOTE: The plan view is from mold locating ring/machine nozzle.

OPERATOR'S SIDE



*S1 screws can be mounted either from the parting line or from the top clamp plate. Specify preference on criteria form when placing order.

Meteor 3 In-Line End Exit Dimensional Information

HOT HALF ASSY. CAT. NO.	MOLD BASE SIZE	B	C	D	E	F	G	H	J	K	L
MEM0100KPH	1215	---	1.000	---	5.375	4.969	5.4375	5.6250	3.8125	---	---
	1315	---	1.000	---	5.375	5.719	5.4375	5.6250	4.5000	---	---
	1220	---	1.000	---	7.500	4.969	7.5625	7.7500	3.8125	---	---
	1321	---	1.000	---	7.625	5.719	7.9375	8.1250	4.1875	---	---
	1620	---	1.000	---	7.125	6.969	7.5625	7.7500	5.0000	---	---
MEM0150KPH	1220	---	1.000	---	7.500	4.969	7.5625	7.7500	3.8125	---	---
	1321	---	1.000	---	7.625	5.719	7.9375	8.1250	4.1875	---	---
	1620	---	1.000	---	7.125	6.969	7.5625	7.7500	5.0000	---	---
MEM0200KPH	1321	---	1.000	---	7.625	5.719	7.9375	8.1250	4.1875	---	---
	1524	3.625	3.625	---	8.625	6.469	8.4375	8.6250	5.0000	---	---
	1924	3.625	3.625	---	8.625	8.781	8.6875	8.8750	7.2500	---	---
MEM0300KPH	1524	3.625	3.625	---	8.625	6.469	8.4375	8.6250	5.0000	---	---
	1924	3.625	3.625	---	8.625	8.781	8.6875	8.8750	7.2500	---	---
	1929	4.562	4.562	---	12.000	8.781	12.1875	12.3750	6.5000	---	---
MEM0400KPH	1826	4.000	4.000	---	10.250	7.969	10.4375	10.6250	6.0000	---	---
	1929	4.562	4.562	---	12.000	8.781	12.1875	12.3750	6.5000	---	---
	2429	4.812	4.812	---	11.750	10.844	11.5625	11.7500	8.5000	13.750	6.750
MEM0500KPH	2429	4.812	4.812	---	11.750	10.844	11.5625	11.7500	8.5000	13.750	6.750
	2435	3.875	3.875	9.625	14.750	10.844	14.6875	14.8750	8.5000	16.750	6.750

NOTE: "S1" screws for 24" wide mold bases are to be 5/8-11 S.H.C.S. All other mold bases require 1/2-13 S.H.C.S.

QDS Mold Bases Available for Meteor 3

HOT HALF ASSEMBLY (PREFIX)	SUITABLE D-M-E QDS MOLD BASES (SUFFIX)															
	1215	1220	1315	1321	1518	1524	1616	1620	1818	1820	1826	1924	1929	2424	2429	2435
IN-LINE END EXIT	MEM0100KPH	✓	✓	✓	✓			✓								
	MEM0150KPH	N/A	✓	N/A	✓			✓								
	MEM0200KPH	N/A	N/A	N/A	✓	N/A	✓					✓				
	MEM0300KPH	N/A	N/A	N/A	N/A	N/A	✓					✓	✓			
	MEM0400KPH	N/A	N/A	N/A	N/A	N/A	N/A	N/A	N/A	N/A	✓	N/A	✓		✓	
	MEM0500KPH	N/A	N/A	N/A	N/A	N/A	N/A	N/A	N/A	N/A	N/A	N/A	N/A	N/A	✓	✓

NOTE: Program expansion ongoing. Contact D-M-E for delivery timeframes regarding availability of other mold base sizes.

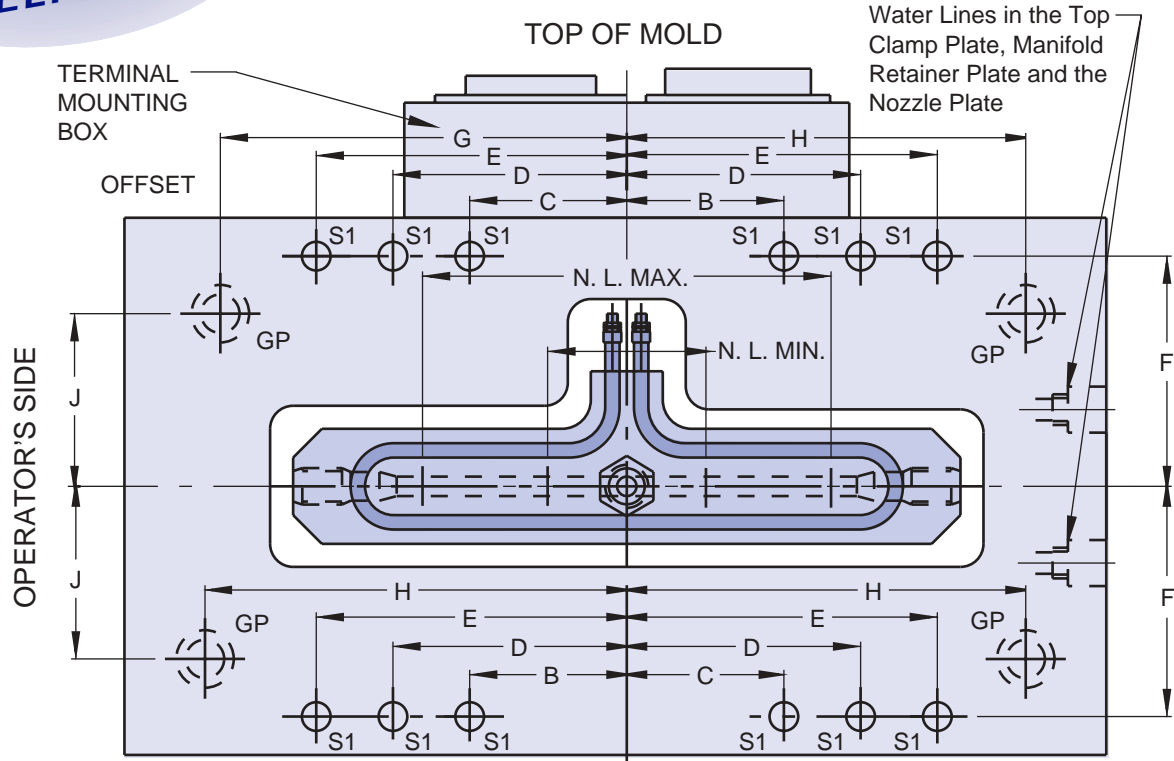
NOZZLE OPTIONS

D-M-E nozzles for use with Meteor 3 systems include:

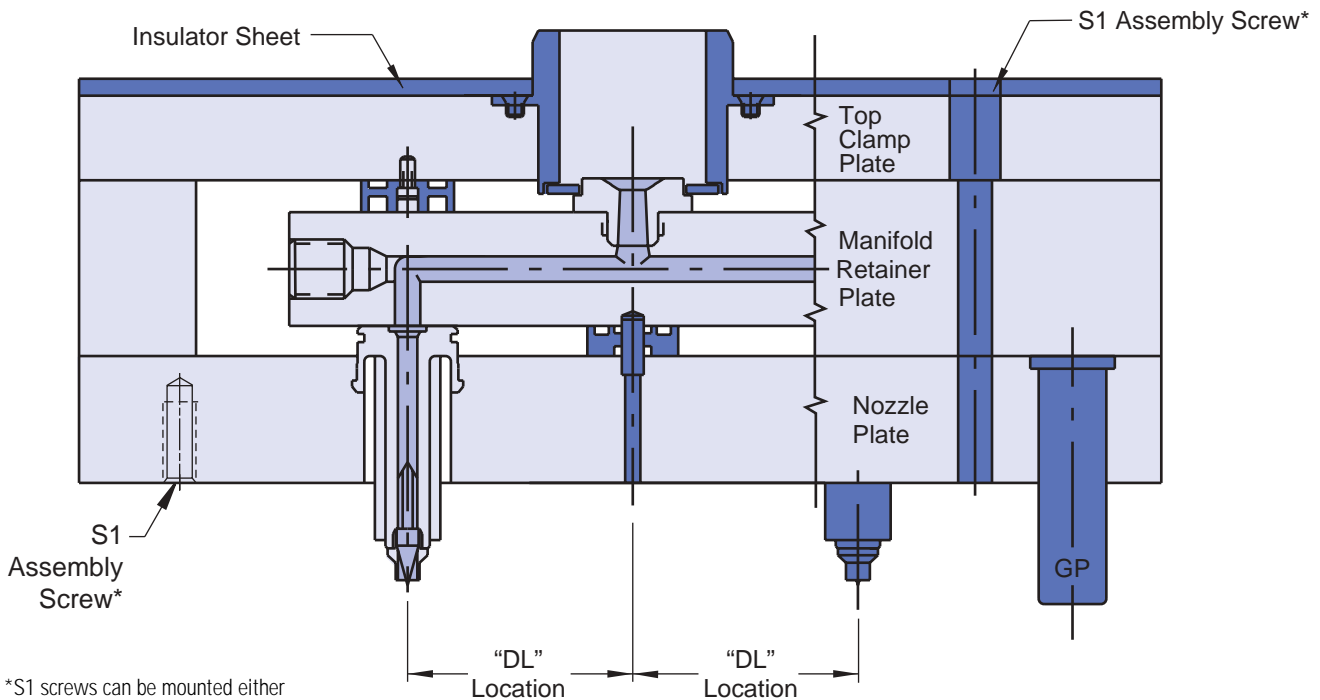
- 250 Series EHA and CIA
- 375 Series EHA and CIA
- Gate-Mate 4 Series

All nozzles have a selection of tip styles to suit material flow and gate cosmetic requirements.

**METEOR 3
THREE-WEEK
DELIVERY!**



NOTE: The plan view is from mold locating ring/machine nozzle.



*S1 screws can be mounted either from the parting line or from the top clamp plate. Specify preference on criteria form when placing order.

Meteor 3 In-Line Center Exit Dimensional Information

HOT HALF ASSY. CAT. NO.	MOLD BASE SIZE	B	C	D	E	F	G	H	J	K	L
MCM0100KPH	1215	---	1.000	---	5.375	4.969	5.4375	5.6250	3.8125	---	---
	1315	---	1.000	---	5.375	5.719	5.4375	5.6250	4.5000	---	---
	1220	---	1.000	---	7.500	4.969	7.5625	7.7500	3.8125	---	---
	1321	---	1.000	---	7.625	5.719	7.9375	8.1250	4.1875	---	---
	1620	---	1.000	---	7.125	6.969	7.5625	7.7500	5.0000	---	---
MCM0150KPH	1220	---	1.000	---	7.500	4.969	7.5625	7.7500	3.8125	---	---
	1321	---	1.000	---	7.625	5.719	7.9375	8.1250	4.1875	---	---
	1620	---	1.000	---	7.125	6.969	7.5625	7.7500	5.0000	---	---
MCM0200KPH	1321	---	1.000	---	7.625	5.719	7.9375	8.1250	4.1875	---	---
	1524	3.625	3.625	---	8.625	6.469	8.4375	8.6250	5.0000	---	---
	1924	3.625	3.625	---	8.625	8.781	8.6875	8.8750	7.2500	---	---
MCM0300KPH	1524	3.625	3.625	---	8.625	6.469	8.4375	8.6250	5.0000	---	---
	1924	3.625	3.625	---	8.625	8.781	8.6875	8.8750	7.2500	---	---
	1929	4.562	4.562	---	12.000	8.781	12.1875	12.3750	6.5000	---	---
MCM0400KPH	1826	4.000	4.000	---	10.250	7.969	10.4375	10.6250	6.0000	---	---
	1929	4.562	4.562	---	12.000	8.781	12.1875	12.3750	6.5000	---	---
	2429	4.812	4.812	---	11.750	10.844	11.5625	11.7500	8.5000	13.750	6.750
MCM0500KPH	2429	4.812	4.812	---	11.750	10.844	11.5625	11.7500	8.5000	13.750	6.750
	2435	3.875	3.875	9.625	14.750	10.844	14.6875	14.8750	8.5000	16.750	6.750

NOTE: "S1" screws for 24" wide mold bases are to be 5/8-11 S.H.C.S. All other mold bases require 1/2-13 S.H.C.S.

QDS Mold Bases Available for Meteor 3

HOT HALF ASSEMBLY (PREFIX)		SUITABLE D-M-E QDS MOLD BASES (SUFFIX)															
		1215	1220	1315	1321	1518	1524	1616	1620	1818	1820	1826	1924	1929	2424	2429	2435
IN-LINE CENTER EXIT	MCM0100KPH	✓	✓	✓	✓				✓								
	MCM0150KPH	N/A	✓	N/A	✓				✓								
	MCM0200KPH	N/A	N/A	N/A	✓	N/A	✓						✓				
	MCM0300KPH	N/A	N/A	N/A	N/A	N/A	✓						✓	✓			
	MCM0400KPH	N/A	N/A	N/A	N/A	N/A	N/A	N/A	N/A	N/A	N/A	✓	N/A	✓		✓	
	MCM0500KPH	N/A	N/A	N/A	N/A	N/A	N/A	N/A	N/A	N/A	N/A	N/A	N/A	N/A	N/A	✓	✓

NOTE: Program expansion ongoing. Contact D-M-E for delivery timeframes regarding availability of other mold base sizes.

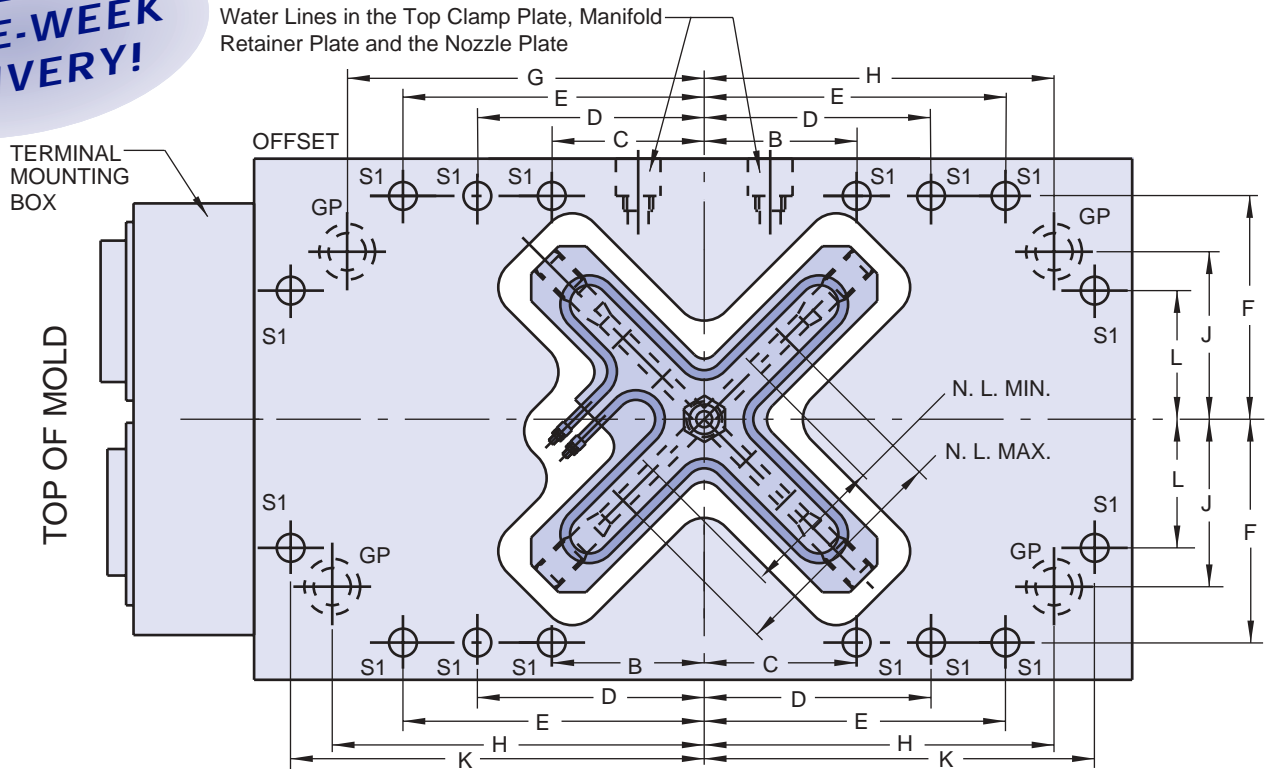
NOZZLE OPTIONS

D-M-E nozzles for use with Meteor 3 systems include:

- 250 Series EHA and CIA
- 375 Series EHA and CIA
- Gate-Mate 4 Series

All nozzles have a selection of tip styles to suit material flow and gate cosmetic requirements.

**METEOR 3
THREE-WEEK
DELIVERY!**

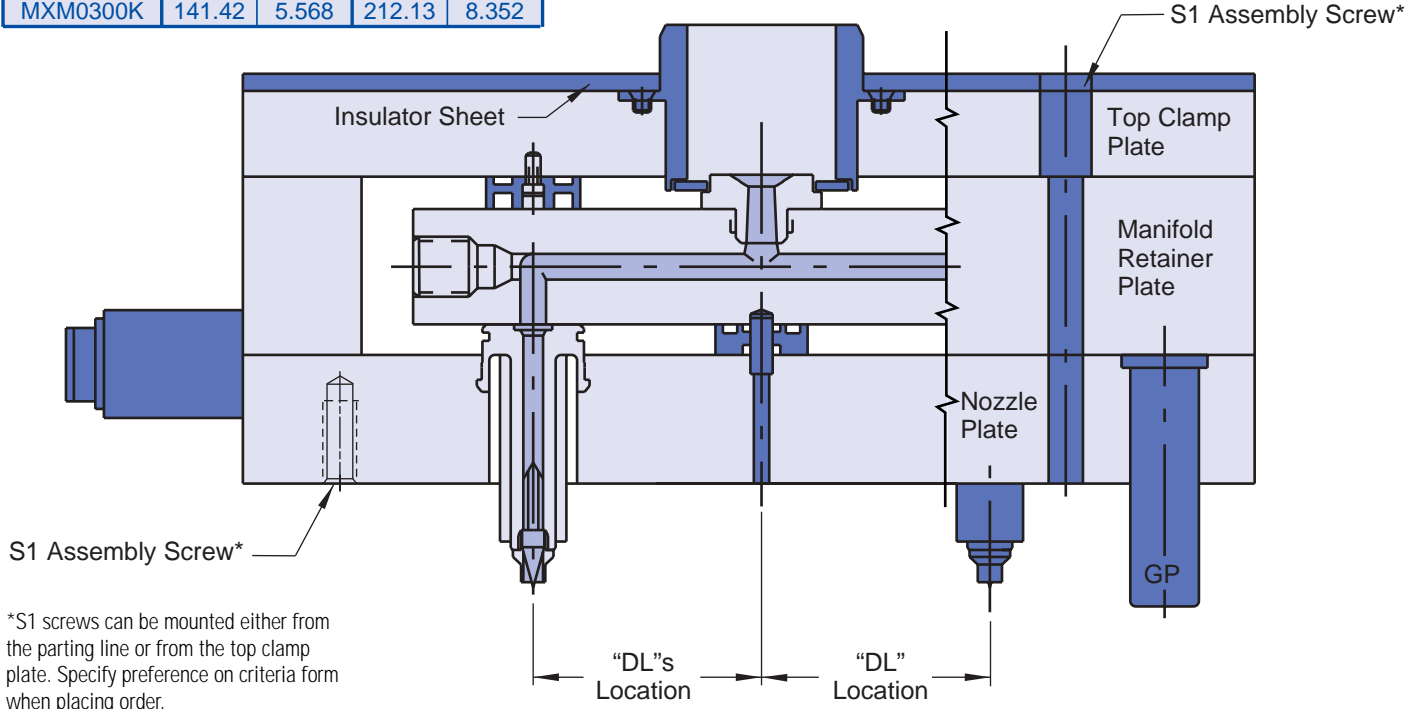


X & Y COORDINATES CROSS-REFERENCE CHART

MANIFOLD KIT CAT. NO.	XY MIN*		XY MAX**	
	mm	inch	mm	inch
MXM0100K	38.90	1.531	70.71	2.783
MXM0150K	70.71	2.783	106.07	4.176
MXM0200K	106.07	4.176	141.42	5.568
MXM0300K	141.42	5.568	212.13	8.352

OPERATOR'S SIDE

NOTE: The plan view is from mold locating ring/machine nozzle.



*S1 screws can be mounted either from the parting line or from the top clamp plate. Specify preference on criteria form when placing order.

Meteor 3 X-Style Dimensional Information

MANIFOLD KIT PLUS CAT. NO.	MOLD BASE SIZE	B	C	D	E	F	G	H	J	K	L
MXM0100KPH	1518	---	1.000	---	6.312	6.469	5.4375	5.6250	5.2500	---	---
	1616	---	1.000	---	5.125	6.969	4.6875	4.8750	5.8125	---	---
	1620	---	1.000	---	7.125	6.969	7.5625	7.7500	5.0000	---	---
MXM0150KPH	1518	---	1.000	---	6.312	6.469	5.4375	5.6250	5.2500	---	---
	1616	---	1.000	---	5.125	6.969	4.6875	4.8750	5.8125	---	---
	1620	---	1.000	---	7.125	6.969	7.5625	7.7500	5.0000	---	---
MXM0200KPH	1818	---	1.000	---	4.562	7.969	5.8125	6.0000	6.5000	---	---
	1820	---	1.000	---	5.562	7.969	6.8125	7.0000	6.5000	---	---
	1924	3.625	3.625	---	8.625	8.781	8.6875	8.8750	7.0000	---	---
MXM0300KPH	2424	3.875	3.875	---	8.875	10.844	8.1250	8.3125	9.1250	10.8125	6.750
	2429	4.812	4.812	---	11.750	10.844	10.6250	10.8125	9.1250	13.750	6.750
	2435	3.875	3.875	9.625	14.750	10.844	13.6250	13.8125	9.1250	16.750	6.750

NOTE: "S1" screws for 24" wide mold bases are to be 5/8-11 S.H.C.S. All other mold bases require 1/2-13 S.H.C.S.

QDS Mold Bases Available for Meteor 3

HOT HALF ASSEMBLY (PREFIX)		SUITABLE D-M-E QDS MOLD BASES (SUFFIX)											
		1518	1524	1616	1620	1818	1820	1826	1924	1929	2424	2429	2435
X-STYLE	MXM0100KPH	✓	N/A	✓	✓								
	MXM0150KPH	✓	N/A	✓	✓								
	MXM0200KPH	N/A	N/A	N/A	N/A	✓	✓		✓				
	MXM0300KPH	N/A	N/A	N/A	N/A	N/A	N/A	N/A	N/A	N/A	✓	✓	✓

NOTE: Program expansion ongoing. Contact D-M-E for delivery timeframes regarding availability of other mold base sizes.

NOZZLE OPTIONS

D-M-E nozzles for use with Meteor 3 systems include:

- 250 Series EHA and CIA
- 375 Series EHA and CIA
- Gate-Mate 4 Series

All nozzles have a selection of tip styles to suit material flow and gate cosmetic requirements.

Reference Information & Part Numbers

Minimum Mold Plate Sizes

MANIFOLD TYPE	MANIFOLD KIT CAT. NO.	MINIMUM WIDTH		MINIMUM LENGTH	
		mm	inch	mm	inch
IN-LINE END EXIT	MEM0100K	302	11-7/8	381	15
	MEM0150K	302	11-7/8	508	20
	MEM0200K	302	11-7/8	527	20-3/4
	MEM0300K	302	11-7/8	610	24
	MEM0400K	302	11-7/8	660	26
	MEM0500K	302	11-7/8	737	29
IN-LINE CENTER EXIT	MCM0100K	302	11-7/8	381	15
	MCM0150K	302	11-7/8	508	20
	MCM0200K	302	11-7/8	527	20-3/4
	MCM0300K	302	11-7/8	660	24
	MCM0400K	302	11-7/8	749	26
	MCM0500K	302	11-7/8	902	29
X-STYLE	MXM0100K	378	14-7/8	406	16
	MXM0150K	378	14-7/8	406	16
	MXM0200K	454	17-7/8	457	18
	MXM0300K	603	23-3/4	603	23-3/4

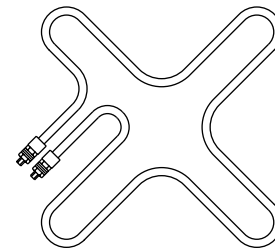
Meteor Wiring Information

MANIFOLD TYPE	MANIFOLD KIT CAT. NO.	D-M-E CONTROLLER	WIRING LOCATION FOR NOZZLES AND MANIFOLD					
			ZONE #1	ZONE #2	ZONE #3	ZONE #4	ZONE #5	ZONE #6
IN-LINE END EXIT	MEM0100K	5 ZONE	NOZZLE #1	NOZZLE #2	MANIFOLD	---	---	---
	MEM0150K		NOZZLE #1	NOZZLE #2	MANIFOLD	---	---	---
	MEM0200K		NOZZLE #1	NOZZLE #2	MANIFOLD	---	---	---
	MEM0300K		NOZZLE #1	NOZZLE #2	MANIFOLD	---	---	---
	MEM0400K		NOZZLE #1	NOZZLE #2	MANIFOLD	---	---	---
	MEM0500K		NOZZLE #1	NOZZLE #2	MANIFOLD TOP	MANIFOLD BTM.	---	---
IN-LINE CENTER EXIT	MCM0100K	5 ZONE	NOZZLE #1	NOZZLE #2	MANIFOLD	---	---	---
	MCM0150K		NOZZLE #1	NOZZLE #2	MANIFOLD	---	---	---
	MCM0200K		NOZZLE #1	NOZZLE #2	MANIFOLD	---	---	---
	MCM0300K		NOZZLE #1	NOZZLE #2	MANIFOLD	---	---	---
	MCM0400K		NOZZLE #1	NOZZLE #2	MANIFOLD	---	---	---
	MCM0500K		NOZZLE #1	NOZZLE #2	MANIFOLD TOP	MANIFOLD BTM.	---	---
X-STYLE	MXM0100K	5 ZONE	NOZZLE #1	NOZZLE #2	NOZZLE #3	NOZZLE #4	MANIFOLD	---
	MXM0150K		NOZZLE #1	NOZZLE #2	NOZZLE #3	NOZZLE #4	MANIFOLD	---
	MXM0200K	8 ZONE	NOZZLE #1	NOZZLE #2	NOZZLE #3	NOZZLE #4	MANIFOLD TOP	MANIFOLD BTM.
	MXM0300K		NOZZLE #1	NOZZLE #2	NOZZLE #3	NOZZLE #4	MANIFOLD TOP	MANIFOLD BTM.

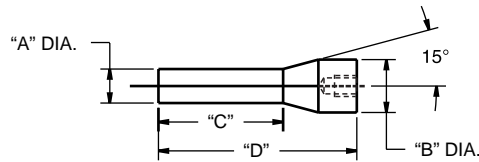
Meteor Spare Parts

MANIFOLD TYPE	MANIFOLD KIT CAT. NO.	TUBULAR HEATER		END PLUG CAT. NO.	SET SCREW CAT. NO.
		CAT. NO.	WATTAGE		
IN-LINE END EXIT	MEM0100K	MEH0100	600	MTP0009	MSS0001
	MEM0150K	MEH0150	750		
	MEM0200K	MEH0200	900		
	MEM0300K	MEH0300	1225	MTP0012	
	MEM0400K	MEH0400	1550		
	MEM0500K	MEH0500	1850		
IN-LINE CENTER EXIT	MCM0100K	MCH0100	600	MTP0009	MSS0001
	MCM0150K	MCH0150	750		
	MCM0200K	MCH0200	900		
	MCM0300K	MCH0300	1225	MTP0012	
	MCM0400K	MCH0400	1550		
	MCM0500K	MCH0500	1850		
X-STYLE	MXM0100K	MXH0100	575	MTP0009	MSS0001
	MXM0150K	MXH0150	1350		
	MXM0200K	MXH0200	1675	MTP0012	
	MXM0300K	MXH0300	2150		

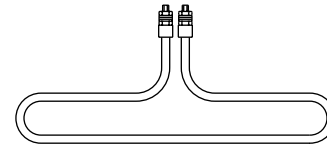
TUBULAR HEATERS



END PLUGS



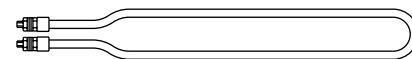
CAT. NO.	"A"		"B"		"C"		"D"	
	mm	in	mm	in	mm	in	mm	in
MTP0009	9	.354	14	.551	33	1.299	52.5	2.067
MTP0012	12	.472	16	.630	60	2.362	77.5	3.051



SET SCREW



- THREAD: M20 X 2.5
- THICKNESS: 20mm/.787in
- HEX FLAT: 10mm/.394in



Meteor 3 Part Numbers

	PART NUMBERS FOR HOT HALF ASSEMBLY	PART NUMBERS FOR HOT HALF ASSEMBLY AND MOLD BASE*	PART NUMBERS FOR HOT HALF ASSEMBLY, MOLD BASE, AND TEMPERATURE CONTROLLER*
IN-LINE END EXIT	MEM0100KPH1215	MEM0100KPHM1215	MEM0100KPHM1215T
	MEM0100KPH1220	MEM0100KPHM1220	MEM0100KPHM1220T
	MEM0100KPH1315	MEM0100KPHM1315	MEM0100KPHM1315T
	MEM0100KPH1321	MEM0100KPHM1321	MEM0100KPHM1321T
	MEM0100KPH1620	MEM0100KPHM1620	MEM0100KPHM1620T
	MEM0150KPH1220	MEM0150KPHM1220	MEM0150KPHM1220T
	MEM0150KPH1321	MEM0150KPHM1321	MEM0150KPHM1321T
	MEM0150KPH1620	MEM0150KPHM1620	MEM0150KPHM1620T
	MEM0200KPH1321	MEM0200KPHM1321	MEM0200KPHM1321T
	MEM0200KPH1524	MEM0200KPHM1524	MEM0200KPHM1524T
	MEM0200KPH1924	MEM0200KPHM1924	MEM0200KPHM1924T
	MEM0300KPH1524	MEM0300KPHM1524	MEM0300KPHM1524T
	MEM0300KPH1924	MEM0300KPHM1924	MEM0300KPHM1924T
	MEM0300KPH1929	MEM0300KPHM1929	MEM0300KPHM1929T
	MEM0400KPH1826	MEM0400KPHM1826	MEM0400KPHM1826T
	MEM0400KPH1929	MEM0400KPHM1929	MEM0400KPHM1929T
	MEM0400KPH2429	MEM0400KPHM2429	MEM0400KPHM2429T
MEM0500KPH2435	MEM0500KPHM2435	MEM0500KPHM2435T	
IN-LINE CENTER EXIT	MCM0100KPH1215	MCM0100KPHM1215	MCM0100KPHM1215T
	MCM0100KPH1220	MCM0100KPHM1220	MCM0100KPHM1220T
	MCM0100KPH1315	MCM0100KPHM1315	MCM0100KPHM1315T
	MCM0100KPH1321	MCM0100KPHM1321	MCM0100KPHM1321T
	MCM0100KPH1620	MCM0100KPHM1620	MCM0100KPHM1620T
	MCM0150KPH1220	MCM0150KPHM1220	MCM0150KPHM1220T
	MCM0150KPH1321	MCM0150KPHM1321	MCM0150KPHM1321T
	MCM0150KPH1620	MCM0150KPHM1620	MCM0150KPHM1620T
	MCM0200KPH1321	MCM0200KPHM1321	MCM0200KPHM1321T
	MCM0200KPH1524	MCM0200KPHM1524	MCM0200KPHM1524T
	MCM0200KPH1924	MCM0200KPHM1924	MCM0200KPHM1924T
	MCM0300KPH1524	MCM0300KPHM1524	MCM0300KPHM1524T
	MCM0300KPH1924	MCM0300KPHM1924	MCM0300KPHM1924T
	MCM0300KPH1929	MCM0300KPHM1929	MCM0300KPHM1929T
	MCM0400KPH1826	MCM0400KPHM1826	MCM0400KPHM1826T
	MCM0400KPH1929	MCM0400KPHM1929	MCM0400KPHM1929T
	MCM0400KPH2429	MCM0400KPHM2429	MCM0400KPHM2429T
MCM0500KPH2429	MCM0500KPHM2429	MCM0500KPHM2429T	
MCM0500KPH2435	MCM0500KPHM2435	MCM0500KPHM2435T	
X STYLE	MXM0100KPH1518	MXM0100KPHM1518	MXM0100KPHM1518T
	MXM0100KPH1616	MXM0100KPHM1616	MXM0100KPHM1616T
	MXM0100KPH1620	MXM0100KPHM1620	MXM0100KPHM1620T
	MXM0150KPH1518	MXM0150KPHM1518	MXM0150KPHM1518T
	MXM0150KPH1616	MXM0150KPHM1616	MXM0150KPHM1616T
	MXM0150KPH1620	MXM0150KPHM1620	MXM0150KPHM1620T
	MXM0200KPH1818	MXM0200KPHM1818	MXM0200KPHM1818T
	MXM0200KPH1820	MXM0200KPHM1820	MXM0200KPHM1820T
	MXM0200KPH1924	MXM0200KPHM1924	MXM0200KPHM1924T
	MXM0300KPH2424	MXM0300KPHM2424	MXM0300KPHM2424T
MXM0300KPH2429	MXM0300KPHM2429	MXM0300KPHM2429T	
MXM0300KPH2435	MXM0300KPHM2435	MXM0300KPHM2435T	

Meteor quick delivery hot runner systems provide fast delivery with D-M-E quality

Available for rapid shipping, Meteor offers custom configured in-line or X-style manifolds for 2- and 4-drop applications. Meteor features greater flexibility and off-the-shelf speed.

Our new family of highly reliable Meteor hot runner systems cuts delivery time and improves performance for designers, moldmakers and molders. Call today to learn more about Meteor quick delivery hot runner systems.



Meteor 3



Meteor 1



Meteor 2



D-M-E Company
 World Headquarters
 29111 Stephenson Highway
 Madison Heights, MI 48071
 800.626.6653 toll free
 248.398.6000 tel
 888.808.4363 fax
 dmeinfo@dme.net email
 www.dme.net web

D-M-E of Canada, Ltd.
 6210 Northwest Drive
 Mississauga, Ontario
 Canada L4V 1J6
 800.387.6600 toll free
 905.677.6370 tel
 800.461.9965 fax

